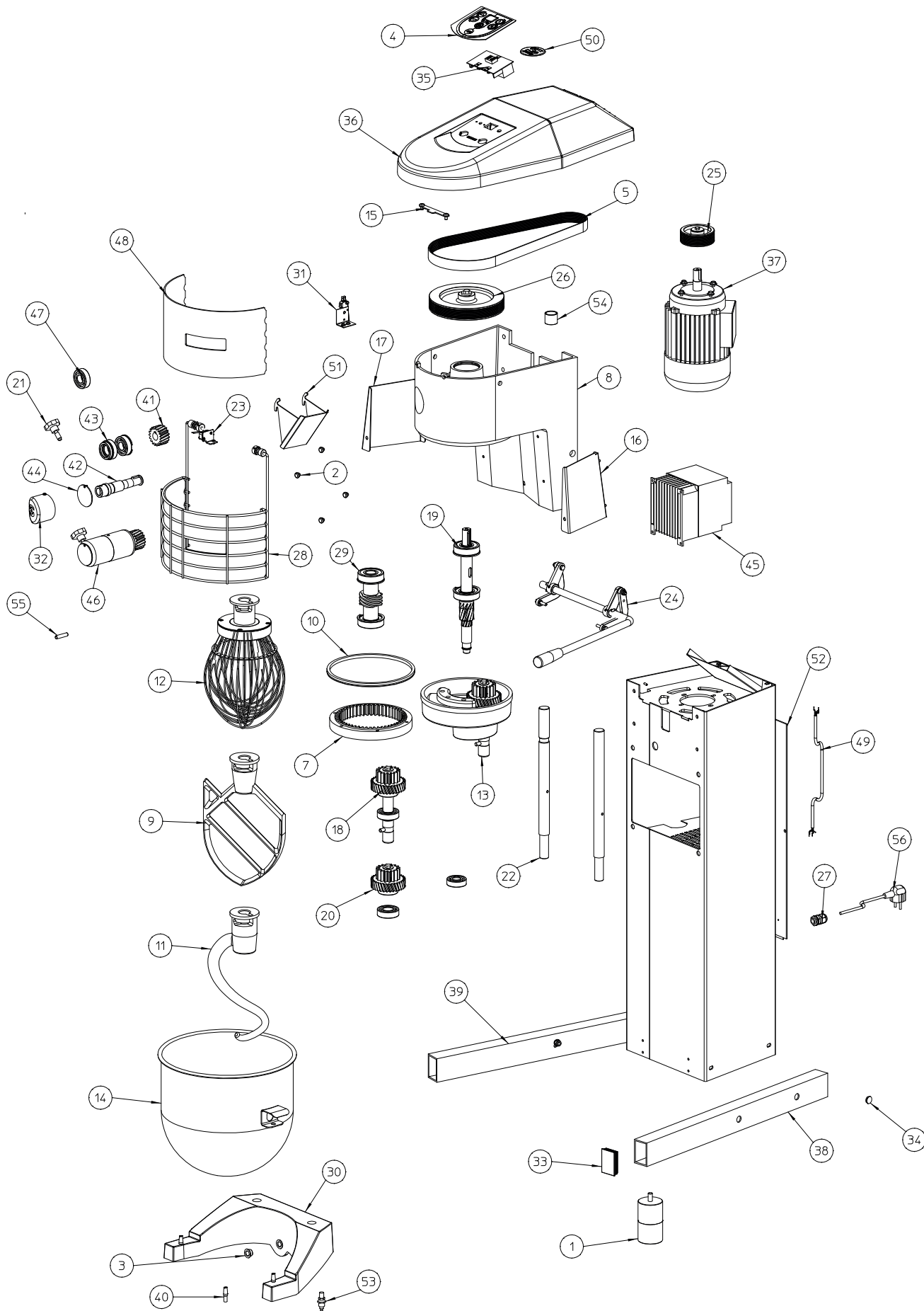


**BATIDORAS-MEZCLADORAS
BE-20 / BE-20C / BE-20I**
**MIXERS
BE-20 / BE-20C / BE-20I**
**BATTEURS-MÉLANGEURS
BE-20 / BE-20C / BE-20I**

N.	Denominación	Description	Dénomination	Cod.
1	Pata batidora BE-20/30/40	Foot set BE-20/30/40	Ens. pied BE-20/30/40	2009129
2	Tacos de goma	Door limit set SK	Tampons porte SU-600 (4)	2052751
3	Guía trasera caldero R	Bowl back guide BM-41	Guide arriere cuve R	2509621
4	Teclado BE-10/20/30/40	Keyboard BE-10/20/30/40	Clavier BE-10/20/30/40	2509505
5	Correa poly-v J-10 1065	Poly-V belt J-10 1065	Courroie poly-V J-10 1065	2509592
6a	Chasis BE-20/30 R	Chassis BE-20/30 R	Châssis BE-20/30 R	2509631
6b	Chasis BE-20/30 INOX R	Chassis BE-20/30 INOX R	Châssis BE-20/30 INOX R	2509632
7	Engrane Z-52 BE-20 R	Gear Z-52 BE-20 R	Couronne Z-52 BE-20 R	2509618
8	Cabezal BE-20 R	Head BE-20 R	Tête BE-20 R	2509594
9a	Paleta BE-20	Beating tool set BE-20	Outil palette BE-20	2509465
9b	Paleta 10L BE-20	Beating tool set 10 l BE-20	Outil palette 10l BE-20	2509466
10	Junta V-ring V-200 tipo L	V-ring V-200 L-type	Joint v-ring V-200 TYPE L	2509593
11a	Gancho amasador BE-20	Kneading tool set BE-20	Outil pétrisseur BE-20	2509463
11b	Gancho amasador BE-20 10L	Kneading tool set 10L BE-20	Outil pétrisseur 10l BE-20	2509464
12a	Mezcladora BE-20	Mixing tool set BE-20	Outil fouet BE-20	2509467
12b	Mezcladora 10l. BE-20	Mixing tool set 10L BE-20	Outil fouet 10 l BE-20	2509468
13	Planetario BE-20 R	Planetary set BE-20 R	Planétaire BE-20 R	2509606
14a	Caldero BE-20	Stainless steel bowl BE-20	Cuve BE-20	2509495
14b	Caldero 10 lts. BE-20	Stainless steel bowl set 10lt. BE-20	Cuve 10L. BE-20	2509496
15	Fijación tapa BE-20/40	Cover fixing set BE-20/40	Fixation prise accessoires BE-20/40	2509430
16	Cierre protección derecha BE-20	Protection lock set D BE-20	Fermeture protection (droit) BE-20	2509431
17	Cierre protección izquierda BE-20	Protection lock set I BE-20	Fermeture protection (gauche) BE-20	2509432
18	Eje porta-útil BE-20	Tool-holder shaft set BE-20	Axe porte outil BE-20	2509433
19	Eje principal BE-20	Main shaft set BE-20	Axe principale BE-20	2509434
20	Engranajes planetario BE-20	Planetary gear set BE-20	Pignons planetaire BE-20	2509435
21	Fijación toma accesorios BE	Attachment drive fixing set BE	Fixation prise accessoires BE-10	2509436
22	Guía elevación caldero BE-20	Bowl lifting guide set BE-20	Guide montée cuve BE-20	2509437
23	Soporte micro caldero BE-20	Bowl microswitch holder set BE-20	Support / Microrrupteur grille BE-20	2509438
24	Palanca elevación caldero BE-20	Lever set bowl lifting BE-20	Levier montée cuve BE-20	2509439
25	Polea motriz BE-20	Driving pulley set BE-20	Poulie motrice BE-20	2509440
26	Polea receptora BE-20	Driven pulley set BE-20	Poulie réceptrice BE-20	2509441
27	Prensaestopas PG-11	Stuffing box PG-11	Presse-étoupes PG-11	2509442
28	Protección caldero BE-20	Bowl protection set BE-20	Protection cuve BE-20	2509443
29	Sinfin rodamiento BE-20	Bearing drive set BE-20	Sans-fin roulement BE-20	2509444
30	Soporte caldero BE-20	Bowl holder set BE-20	Support cuve BE-20	2509445
31	Soporte micro elevación caldero BE-20	Bowl lifting microswitch holder set BE-20	Support microrrupteur montée cuve BE-20	2509446
32	Tapón cabezal	Head plug set	Bouchon tête	2509447
33	Tapón tubo 60X40	Tube plug set 60X40	Bouchon tube 60X40	2509448
34	Tapón Ø15	Plug set Ø15	Bouchon Ø15	2509449
35a	Placa mandos BE	Print keyboard set (BE)	Plaque électronique clavier	2509450
35b	Placa mandos BE 380-440V	Print keyboard BE 380-440V	Tableau de commande BE 380-440V	2509545
35c	Placa mandos BE 120V	Print keyboard set BE 120V	Tableau de commande BE 120V	2509546
36	Tapa mandos BE-20	BE-20 controls cover set	Couvercle commandes BE-20/30	2509451
37a	Motor BE-20C	Motor set BE-20C	Moteur BE-20C	2509452
37b	Motor BE-20	Motor set BE-20	Moteur BE-20	2509462
37c	Motor BE-20 230-400V	Motor set BE-20 230-400V	Moteur BE-20 230-400V	2509547
38	Pata derecha BE-20	Foot set (right hand) BE-20	Pied droit BE-20	2509453
39	Pata izquierda BE-20	Foot set (left hand) BE-20	Pied gauche BE-20	2509454
40	Guía caldero BE-20	Bowl guide set BE-20	Guide cuve BE-20	2509455
41	Corona toma accesorios BE-20	Rim set (attachment drive) BE-20	Couronne prise accessoires BE-20	2509456
42	Eje toma accesorios BE-20	Attachment drive shaft set BE-20	Axe prise accessoires BE-20	2509457
43	Retén + rodamiento toma accesorios	Attachment drive retainer + bearing set	Roulement-joint prise accessoires	2509458
44	Tapa toma accesorios BE	Attachment drive cover set BE	Bouchon prise accessoires BE	2509459
45a	Variador BE-20C	Variator set BE-20C	Variateur BE-20C	2509460
45b	Variador BE-20	Variator set BE-20	Variateur BE-20	2509461
45c	Variador BE-20 380-440V	Variator set BE-20 380-440V	Variateur BE-20 380-440V	2509512
45d	Variador BE-20 120V	Variator set BE-20 120V	Variateur BE-20 120V	2509518
46	Toma accesorios BE-20 R	Accessory connection BE-20 R	Prise d'accessoires BE-20 R	2509607
47	Rodamientos PS-12	Bearing set PS-12	Roulements PS-12	2059206
48	Visor armazón BE-20	Frame viewer BE-20	Ecran protecteur grille BE-20	2509609
49	Cableado BE-20/BE-40 R	Electric wiring BE-20/BE-40 R	Câblage BE-20/BE-40 R	2509610
50	Adhesivo Sammic Ø60 plata	Adhesive Sammic Ø60 PLATA	Adhésif Sammic Ø60 argent	2142595
51	Cargador exterior BE-20/30/40	External loader BE-20/30/40	Chargeur extérieur BE-20/30/40	2509612
52	Tapa trasera BE-20 R	Back cover BE-20 R	Couvercle arriere BE-20 R	2509619
53	Detector magnetico D10P	Detector magnetic set D10P	Détecteur magnétique D10P	2509555
54	Casquillo sint. A-25-30-25	Sint. Washer A-25-30-25	Bague sintétique SINT. A-25-30-25	2509620
55	Pasadores porta-útil	Tool holder bolts set	Goupilles porte outil	2509173
56a	Cable manguera 3X1.5 (EU)	Hose wire 3X1.5 (EU)	Câble gaine 3X1.5 (EU)	2009654
56b	Cable manguera 3X1.5 UK	Hose wire set 3X1.5 UK	Câble gaine 3X1.5 UK	2009659
56c	Cable manguera 3X14AWG 6-20P CL	Hose wire 3X14AWG 6-20P CL	Câble gaine 3X14AWG 6-20P CL	2509549
56d	Cable manguera 3X1.5 R	Hose wire 3x1,5R	Câble gaine 3X1.5 R	2509626



Nota: Todas estas especificaciones están sujetas a cambio sin previo aviso, debido a la permanente mejora del producto.
 Note: These specifications are subject to change without prior notice due to continuous product improvement.
 Note: Toutes ces spécifications peuvent être modifiées sans préavis dû à une permanente amélioration du produit.